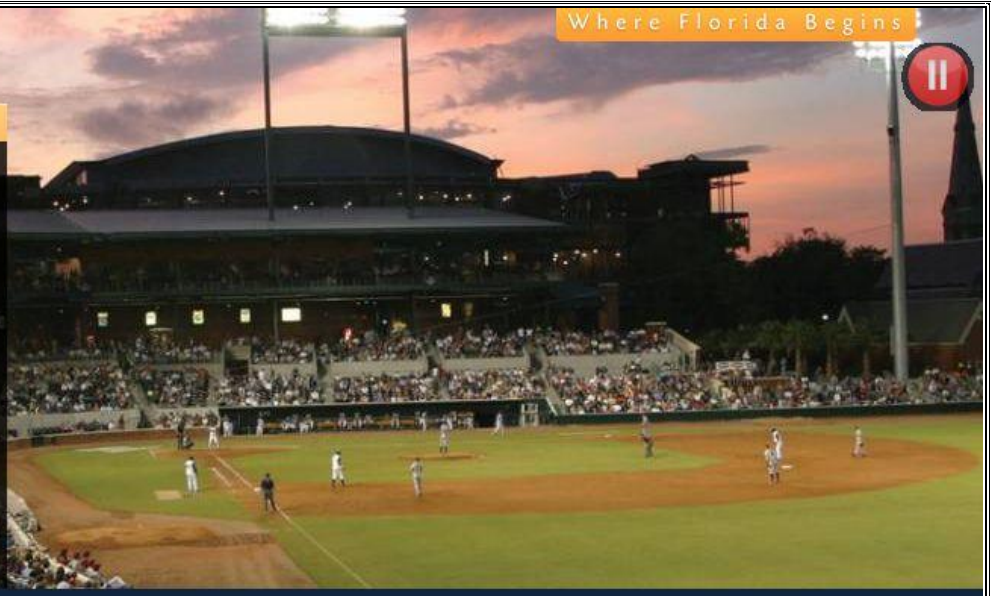


Welcome To Jacksonville!

BIG JACKSONVILLE EVENTS

Florida State Championship comes to Jacksonville!

next >



FLORIDA CHAMPIONSHIP

SPA "WORLD SERIES QUALIFIER!!!"
Jacksonville, Florida - August 9th – 12th, 2012



The 2012 "Florida" Championships will be held Thursday, August 9th thru Sunday, August 12th at Drew Park and Ringerhavor Park in Jacksonville, Florida. This tournament will be open to all teams from all states. The entry fee is \$395. The format will be two round robin seeding games and a double elimination format using SPA rules with a 4 game minimum guarantee. **All rosters must be submitted online to the SPA website. All teams must be registered with the SPA.** Florida Half Century teams are encouraged to come join this tournament. Florida Half century teams (those using their FHC rosters) ranked 1-10 will be classified as Major, FHC teams rated 11- 30 will be classified as Triple A and FHC teams rated 31 and up will be classified as Double AA. FHC teams using amended rosters may be bumped to a higher classification.

Entry Fee's must be received by July 31, 2012. To enter, fill out the entry form in its entirety and send it to Curt Hollis at curt@classicspringtraining.com or (904) 303-7798. All checks should be made out to: **Florida First Coast Softball** and mailed to Curt Hollis, 2974 Hartley Road West, Jacksonville, Florida 32257. Please include a copy of your entry form.

Updated information regarding this tournament will be posted on my North Florida Hit Club forum at www.northfloridahitclub.proboards.com/ Once approved (allow 24 hours), click on the "SENIORBALL" forum and find out more about this tournament and how to get your team qualified for the SPA's first ever "World SERIES" of Softball Tournament in Jacksonville, Florida on October 31 through November 4th, 2012.



Manager's Meeting will be held as follows:

65's & up – Thursday, August 9th at 8:30 am, 2nd floor, park building

60's – Friday, August 10th at 8:30, 2nd floor, park building

50's – 55's – Friday, August 10th at 12:00pm, 2nd floor, park building

Games will be played according to the 2012 SPA rulebook. **All players must check-in prior to playing their first game with a current SPA card and government approved, photo identification, such as a driver's license.** (Please check in as a team). Team managers will be given 6 balls at the manager's meeting. (additional balls can be purchased at the fields). Teams are responsible for chasing their own balls. Awards: 1st and 2nd place team awards, All Tournament team awards, MVP offense and Defense awards. The games will begin at 9:00 am each day. The 50's and 55's will begin play at 1:00 pm on Friday. **The top 3 teams in each division receive a berth to the SPA's first "WORLD SERIES" to be held in Jacksonville, Florida October 31 thru November 4th, 2012.**

The following is the schedule by age:

Men - 4 Game Minimum

70+, 75+	August 9, 10 & 11
65+	August 9, 10 & 11
60+	August 10, 11 & 12
50+, 55+	August 10, 11 & 12

AAA & AA Played at Ringhavor Park / Major Plus & Major Played at Drew Park

Official Team Entry Form

All teams competing in this double qualifier tournament must meet all **SPA's** Player/Team Registration requirements. Please type (or print legibly) the required information and return this completed and signed form with your entry fee to:

Curt Hollis, Tournament Director
Florida First Coast Softball
2973 Hartley Road West
Jacksonville, Fl. 32257

The deadline for filing your **Team Entry Form** is **July 31, 2012**. The tournament "**Entry Fee**" of **\$395.00** must accompany the "**Team Entry Form.**" Please make your check payable to **Florida First Coast Softball**.

Our team desires to participate in the **SPA's Florida Championship Softball Tournament** in Jacksonville, Florida on August 9 -12, 2012:

Team Name _____

Division: (Circle One) 50+ 55+ 60+ 65+ 70+ 75+
Classification: (Circle One) AA AAA Major Major Plus
Manager's Name _____ E-Mail: _____
Address _____ City _____ State _____ Zip _____
Phone No. Home: () _____ Work: () _____ Cell: () _____
Asst. Mgr./Player (**with E-Mail**) Name: _____ E-Mail: _____
Phone No. Home: () _____ Work: () _____ Cell: () _____

As team manager, I have reviewed, fully understand and will comply with the detailed information, administrative requirements and guidelines provided for this tournament, including the tournament format, age eligibility and grouping, playing rules, uniform requirements, tournament schedule, and team entry deadline of **July 31, 2012**. The typed, fully completed and signed **Official Team Roster(s)** must also be received by Florida First Coast Softball on or before **July 31, 2012**. These deadlines have been established to allow for planning, reliability and the convenience of team managers and tournament officials so that tournament pairings, schedules and all pertinent information may be prepared, reviewed and communicated to each team manager at least seven days prior to start of the tournament.

I understand that team entries will be closed by the registration deadline of **July 31, 2012**. Your team's entry into this tournament is accepted on the condition that you realize the possibility of early termination due to adverse weather and that you accept this policy. In order to recover a portion of pre-tournament expenses, a refund check of \$325.00 will be returned to each team if the tournament is completely cancelled due to weather. Every effort will be made to complete the entire tournament.

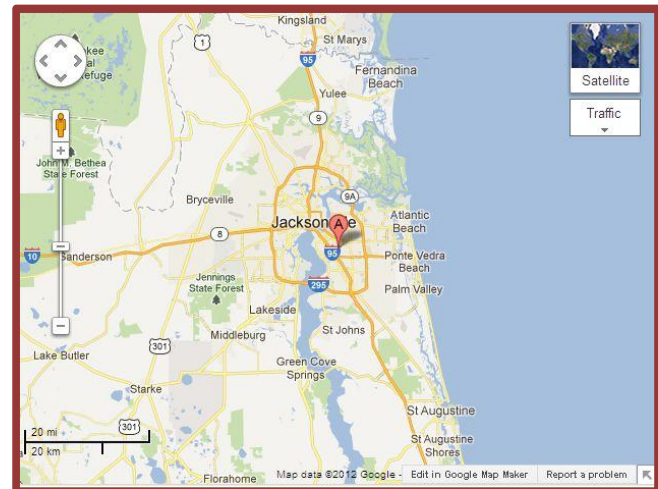
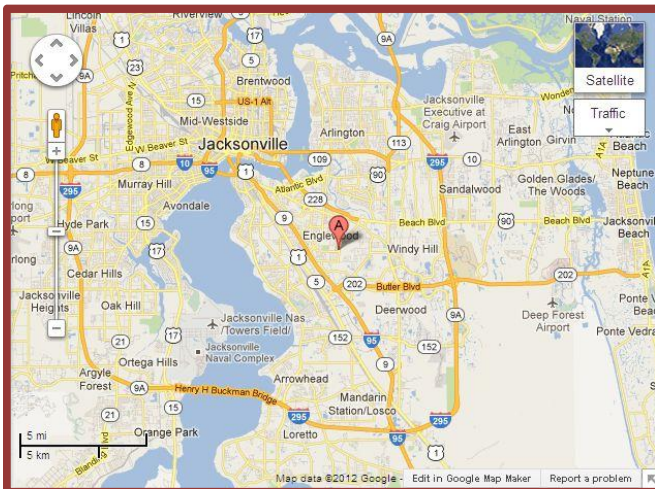
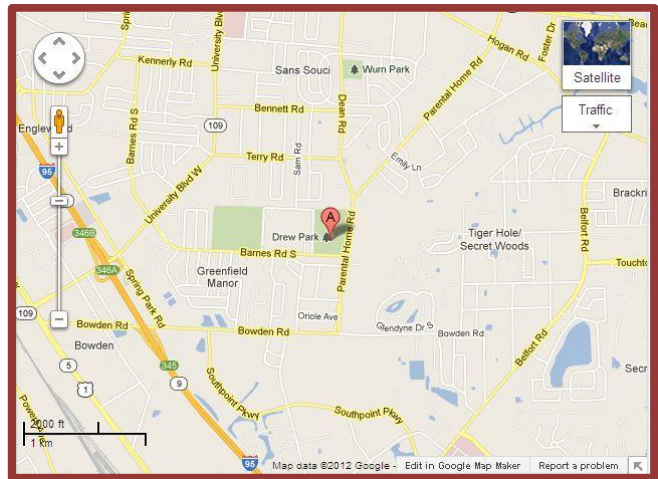
I further attest that information given by me is true and my signature and the enclosed team registration entry fee in the amount of **\$395.00** on or before July 31, 2012 is rendered in good faith.

Manager's Name: _____ Signature: _____

Date: ____/____/____

Parks and Hotels:

Drew Park – 6621 Barnes Road South, Jacksonville, Fl. 32216



Directions – From Interstate 95 exit at Bowden Road, go east (left for southbound I-95er's, right for northbound I-95ers) approximately one mile to Parental Home Road, turn left (north) on Parental Home Road and go one half mile. Drew Park is on your left.

Host Hotels :

To see a selection of hotels, along with their room rates in the Jacksonville area, please click on or paste this link to your browser. <http://www.visitjacksonville.com/2012flstchampionship>

After clicking this link,

at the top right hand corner of the page, click on the word(here) **Related Event Links**

- Book your discounted hotel rooms [here](#)

Follow the steps and it will quickly lead you to a list of motels and their room rates for this event.

Host Hotels for the Drew Park:

To book your hotel room at the **Wingate by Wyndham South** motel, click [here](#) or cut and paste the following link:

http://www.wingatehotels.com/hotels/hotel-overview?hotel_id=11486&cid=IP-

[WIN_PPC_GGL_TM&wid=ps:br&008=&004=2373824589&005=15644465799&006=10691981109&007=Search&002=2194806](http://www.wingatehotels.com/hotels/hotel-overview?hotel_id=11486&cid=IP-WIN_PPC_GGL_TM&wid=ps:br&008=&004=2373824589&005=15644465799&006=10691981109&007=Search&002=2194806)



Wingate by Wyndham South

4681 Lenoir Avenue South

Jacksonville, FL 32216

Phone: 904-281-2600, Fax: 904-281-1166



To book your hotel room, click [here](#) or cut and paste the following link

<http://www.marriott.com/hotels/travel/jaxbb-fairfield-inn-and-suites-jacksonville-butler-boulevard/>

Fairfield Inn & Suites Marriott Jacksonville Butler Blvd

4888 Lenoir Ave

Jacksonville, FL 32216

904-854-6200, Fax: 904-854-6202



To book your hotel room, click [here](http://www.holidayinn.com/hotels/us/en/jacksonville/jaxes/hoteldetail) or cut and paste this link:

<http://www.holidayinn.com/hotels/us/en/jacksonville/jaxes/hoteldetail>

Holiday Inn East I-295 & Baymeadows

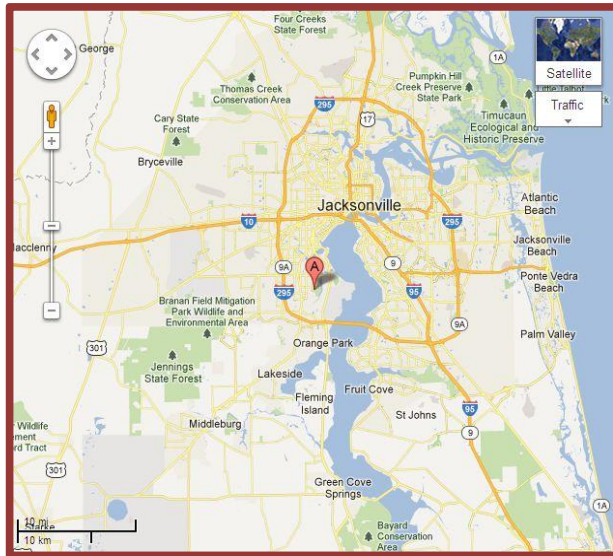
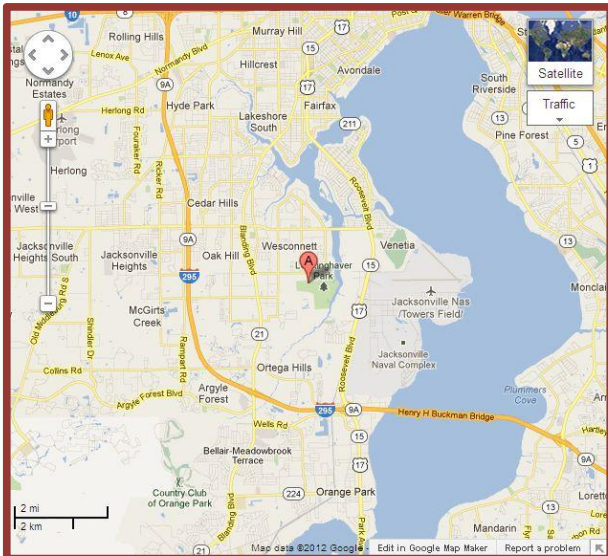
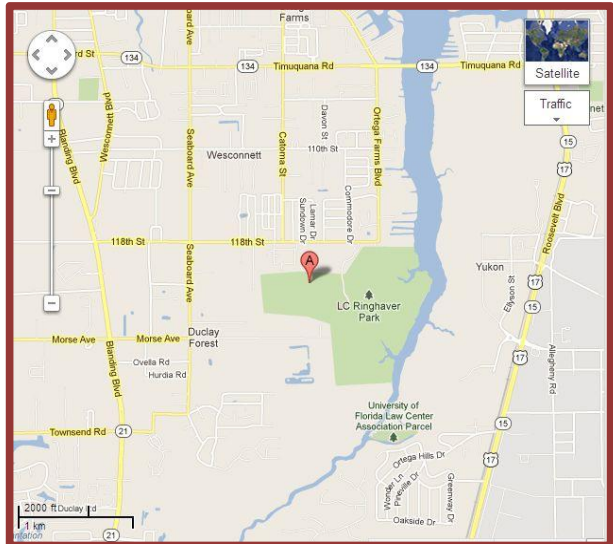
11083 Nurseryfields Drive

Jacksonville, FL 32256

Hotel Front Desk: 1-904-854-8000 Hotel Fax: 1-904-854-8001

See Ringhavor Park Information on the following pages:

Ringhavor Park – 5198 118th Street, Jacksonville, Fl. 32244



Directions – From I-95 Northbound – Take Interstate 295 North, which is located south of Jacksonville across the 3 mile long Buckman Bridge, take the second exit, Blanding Boulevard (Highway 21) to your right (north) go approximately 2 miles to 118th Street. Turn right (east) on 118th Street, go past the blinking traffic light, after ½ mile, look for the soccer fields on the right. Take the soccer field access road all the way back to the ball fields.

Directions – From I-95 Southbound – Take Interstate 295 south, which is located north of Jacksonville around the western side of Jacksonville to Blanding Boulevard (Highway 21). Turn north (left) on Blanding Boulevard and go approximately 2 miles to 118th Street. Turn right (east) on 118th Street, go past the blinking traffic light, after ½ mile, look for the soccer fields on the right. Take the soccer field access road all the way back to the ball fields.

Directions – From I-10 Eastbound – Take Interstate 295 south, which is located west of Jacksonville around the southwest side of Jacksonville to Blanding Boulevard (Highway 21). Turn north (left) on Blanding Boulevard and go approximately 2 miles to 118th Street. Turn right (east) on 118th Street, go past the blinking traffic light, after 1/2 mile, look for the soccer fields on the right. Take the soccer field access road all the way back to the ball fields.

Host Hotels for the Ringhavor Park



To book your hotel room, click [here](http://www.bestwesternorange.com/map.shtml) or cut and paste this link.
<http://www.bestwesternorange.com/map.shtml>

Best Western Southside Hotel & Suites

4580 Collins Road

Jacksonville, FL 32244

Phone 904 264-4466

E-Mail bestwesterngm@yahoo.com

To book at these host hotels or at other discounted hotels for this tournament, click below



Event begins on **Thursday, August 9, 2012**

Information provided by:

Curt Hollis

Reebok Senior Softball Ambassador

Hollis Sports, Inc./Owner

Classic Spring Training/President

Florida Senior Sports Association/State Director

Florida First Coast Softball/Board Member

North Florida Hit Club/Founder

#54 Hollis Appraisals / 50 Major Plus / Player

curt@classicsspringtraining.com